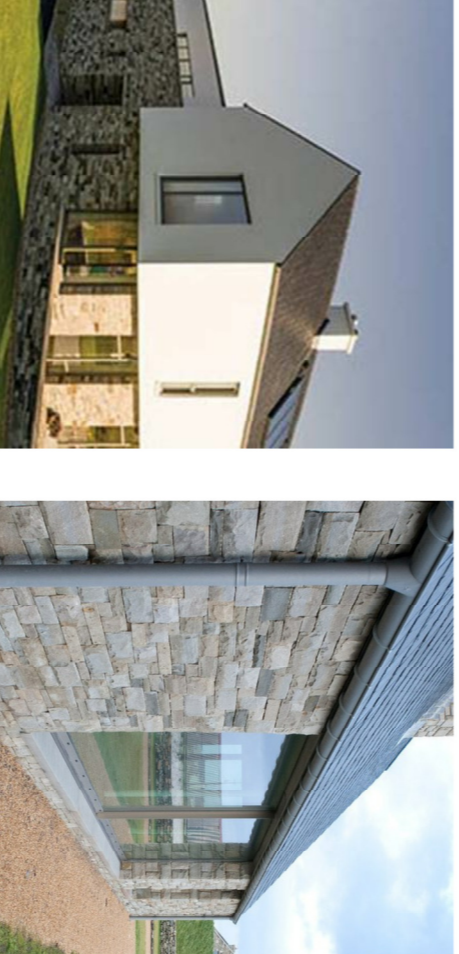
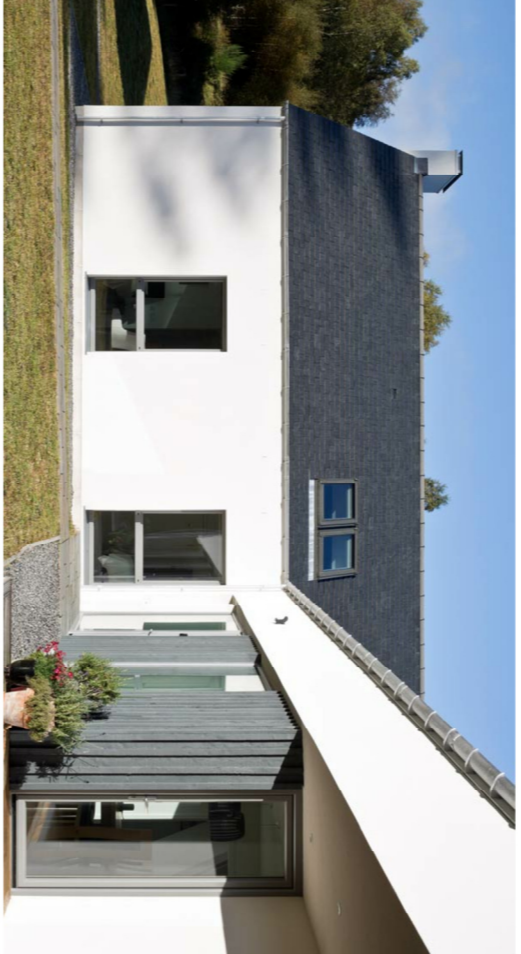
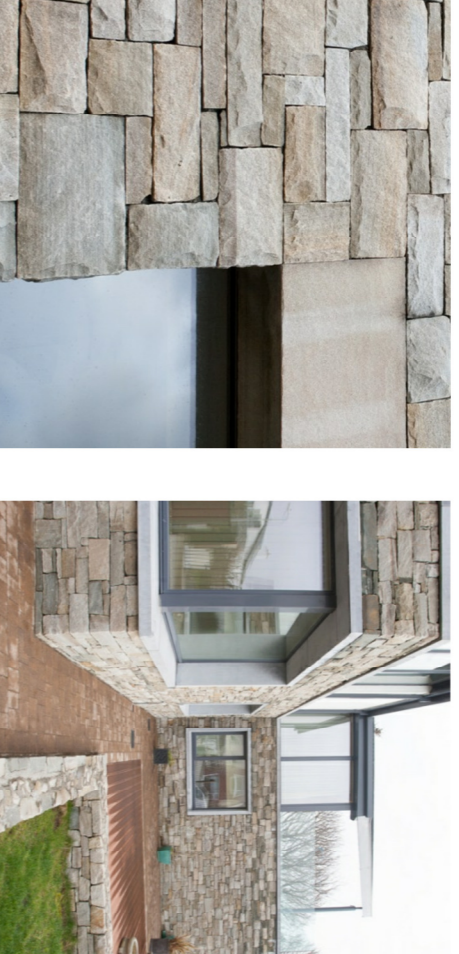
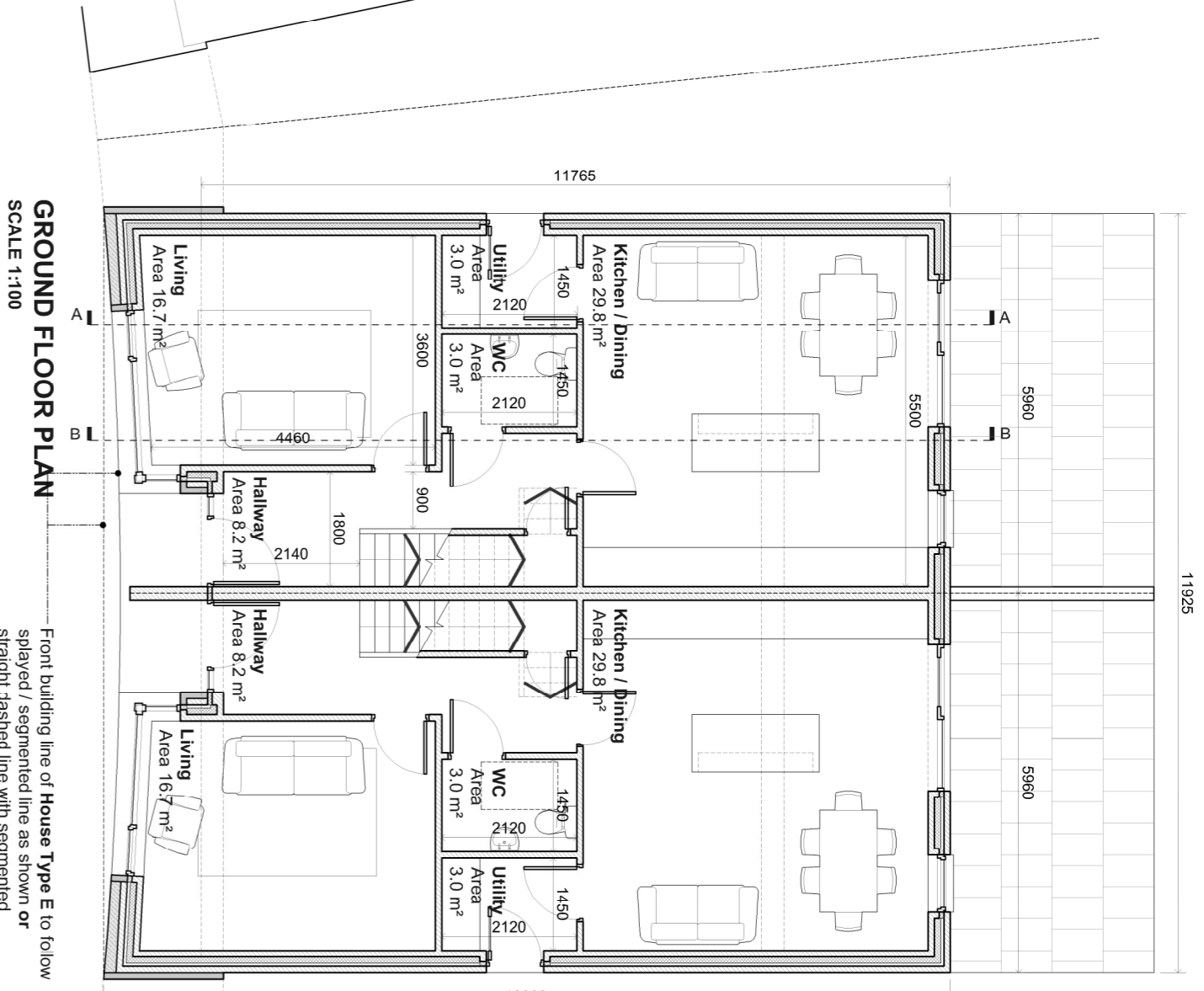


HOUSE TYPE E
Semi-detached 4 bedroom
2 1/2 storey
140 m ² / 1505 sq. ft.

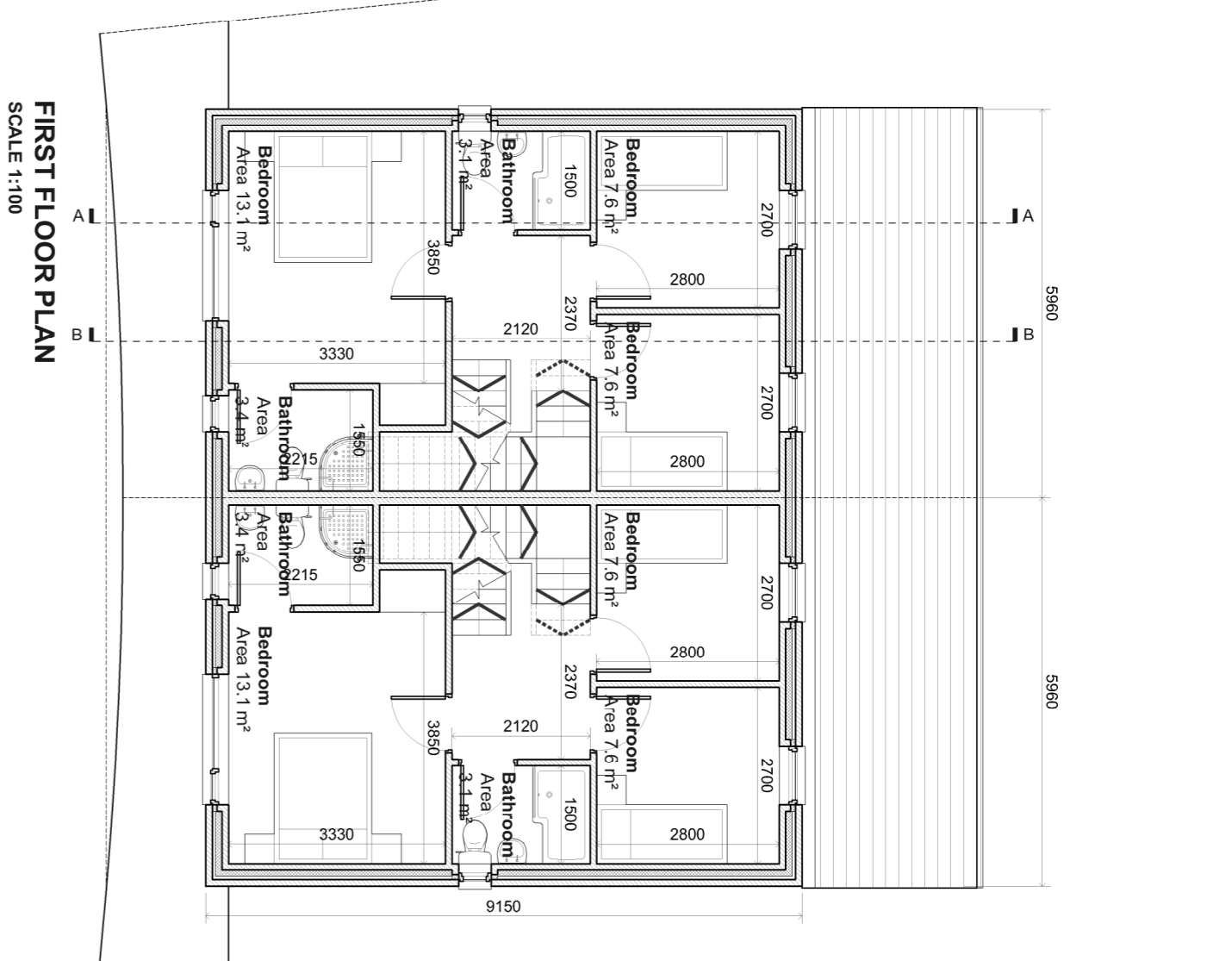
REFER TO SITE LAYOUT PLAN FOR INDIVIDUAL HOUSE FLOOR LEVELS AND HOUSE ORIENTATION



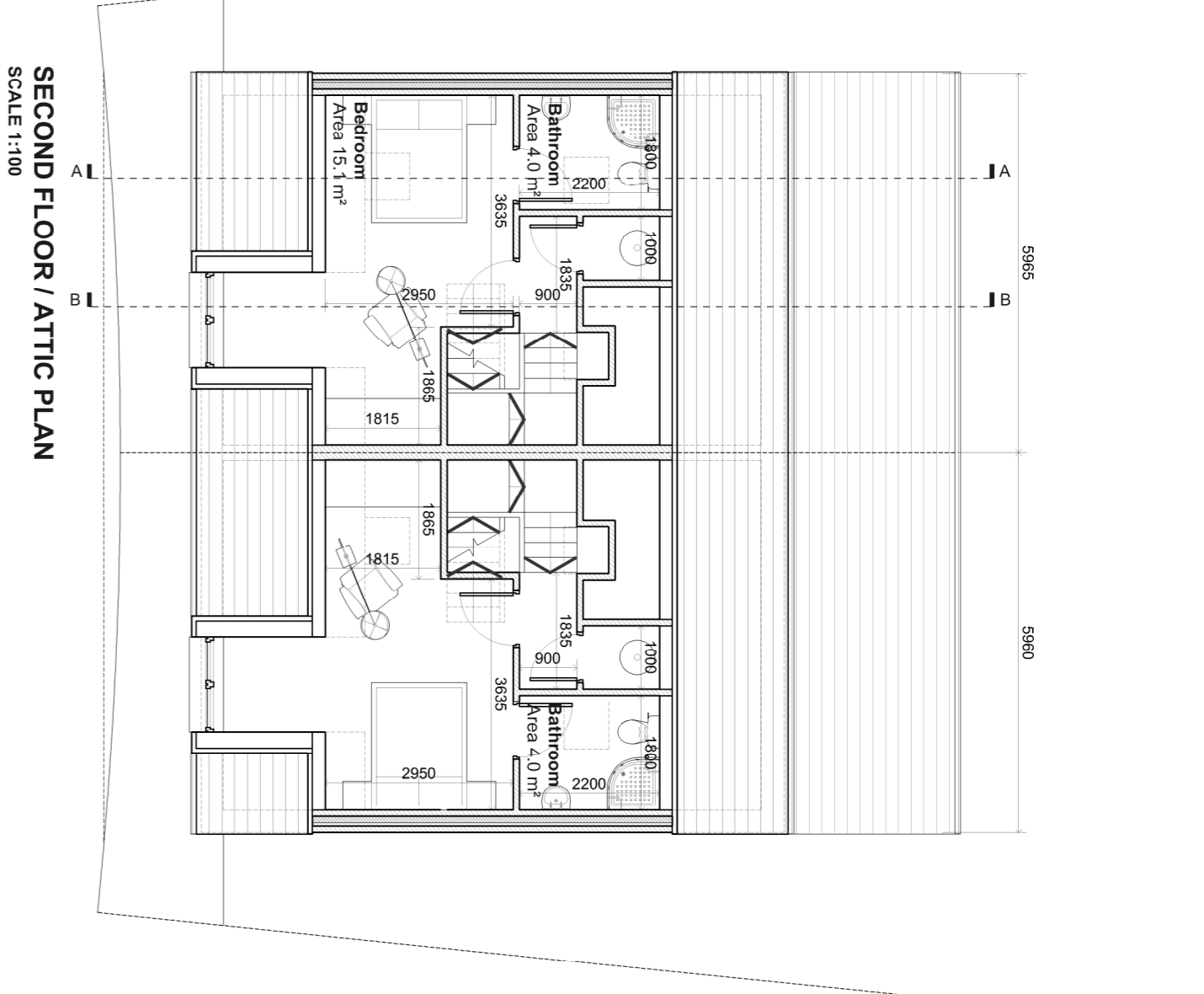
REFERENCE IMAGES



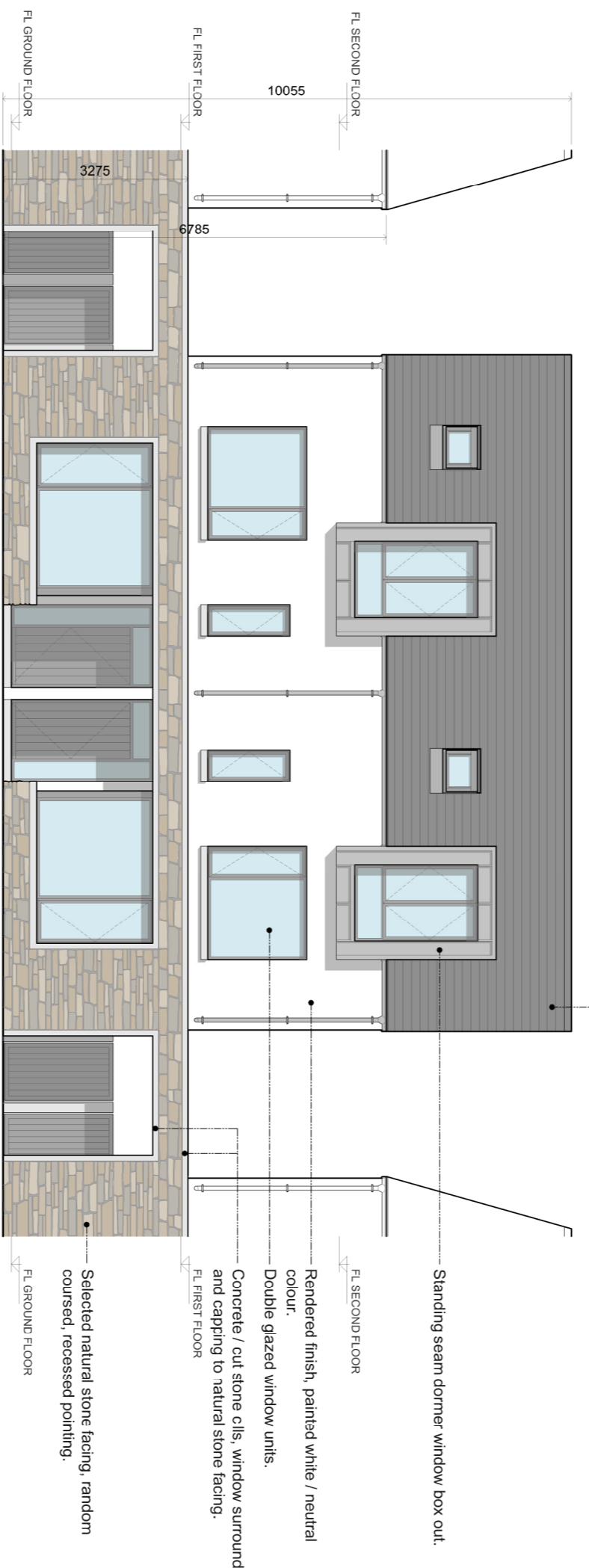
GROUND FLOOR PLAN SCALE 1:100



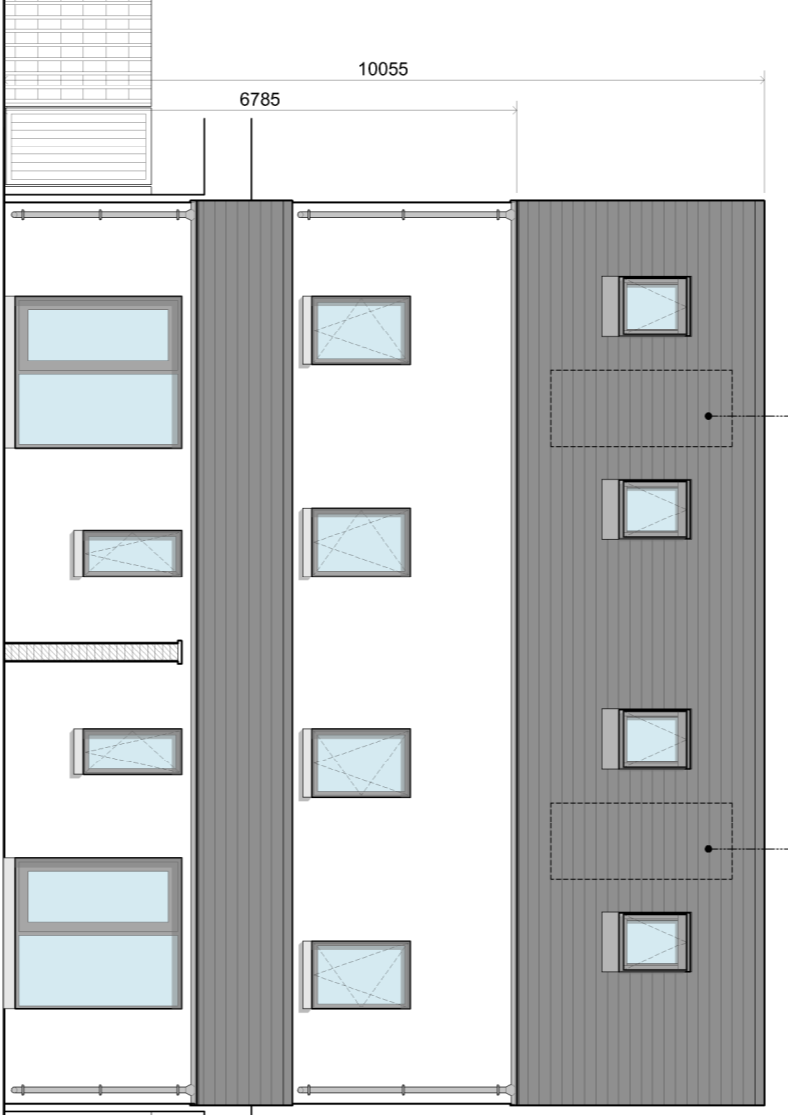
FIRST FLOOR PLAN SCALE 1:100



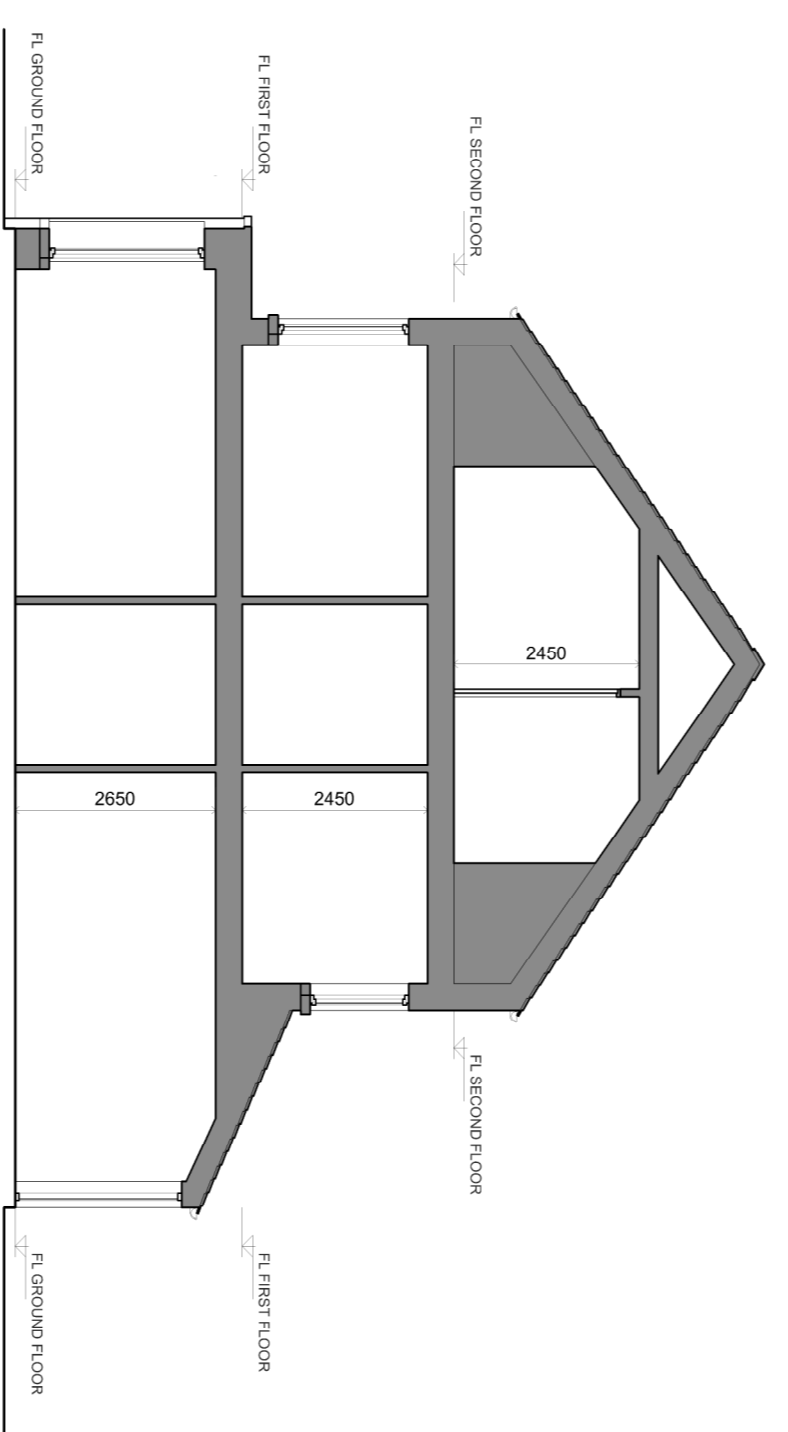
SECOND FLOOR / ATTIC PLAN SCALE 1:100



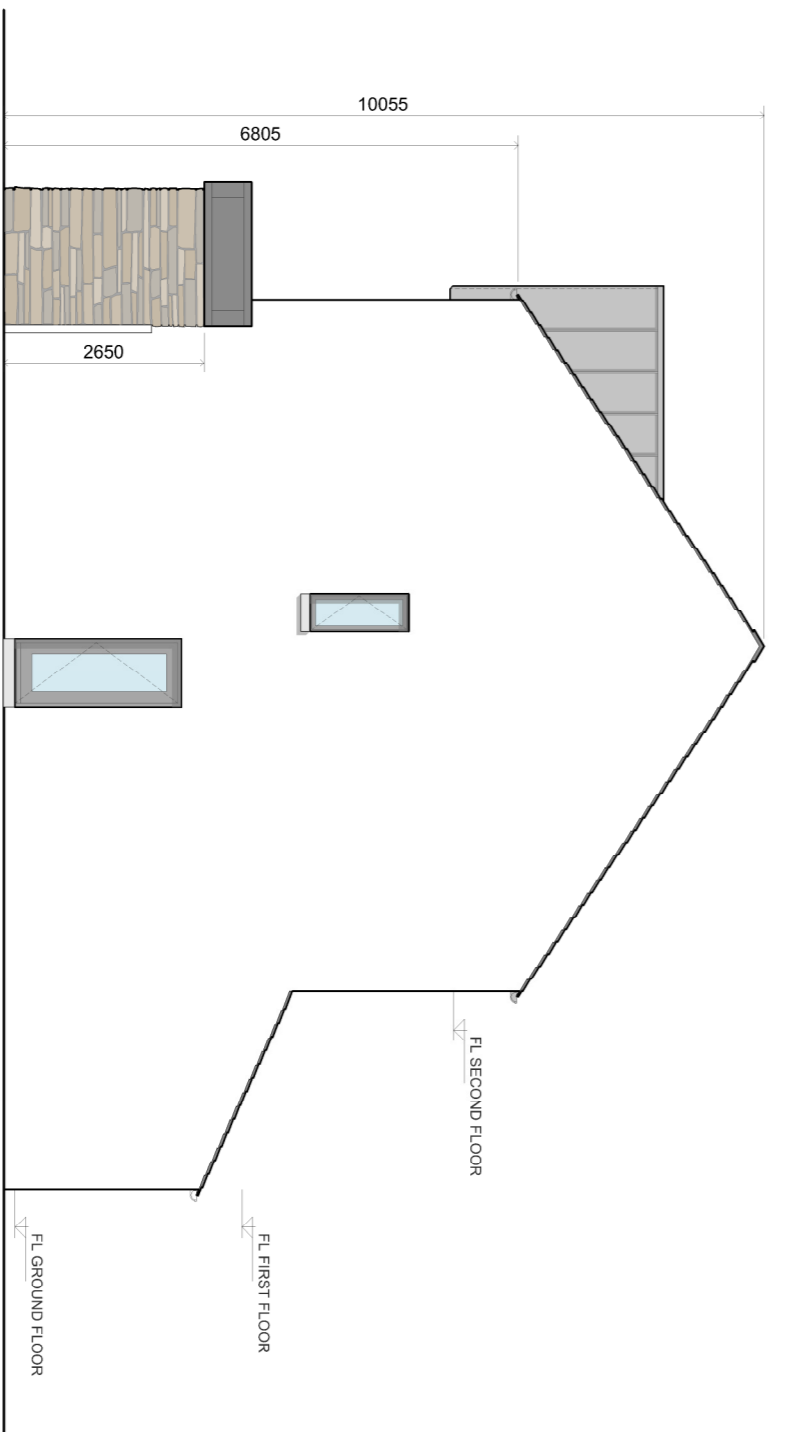
FRONT ELEVATION SCALE 1:100



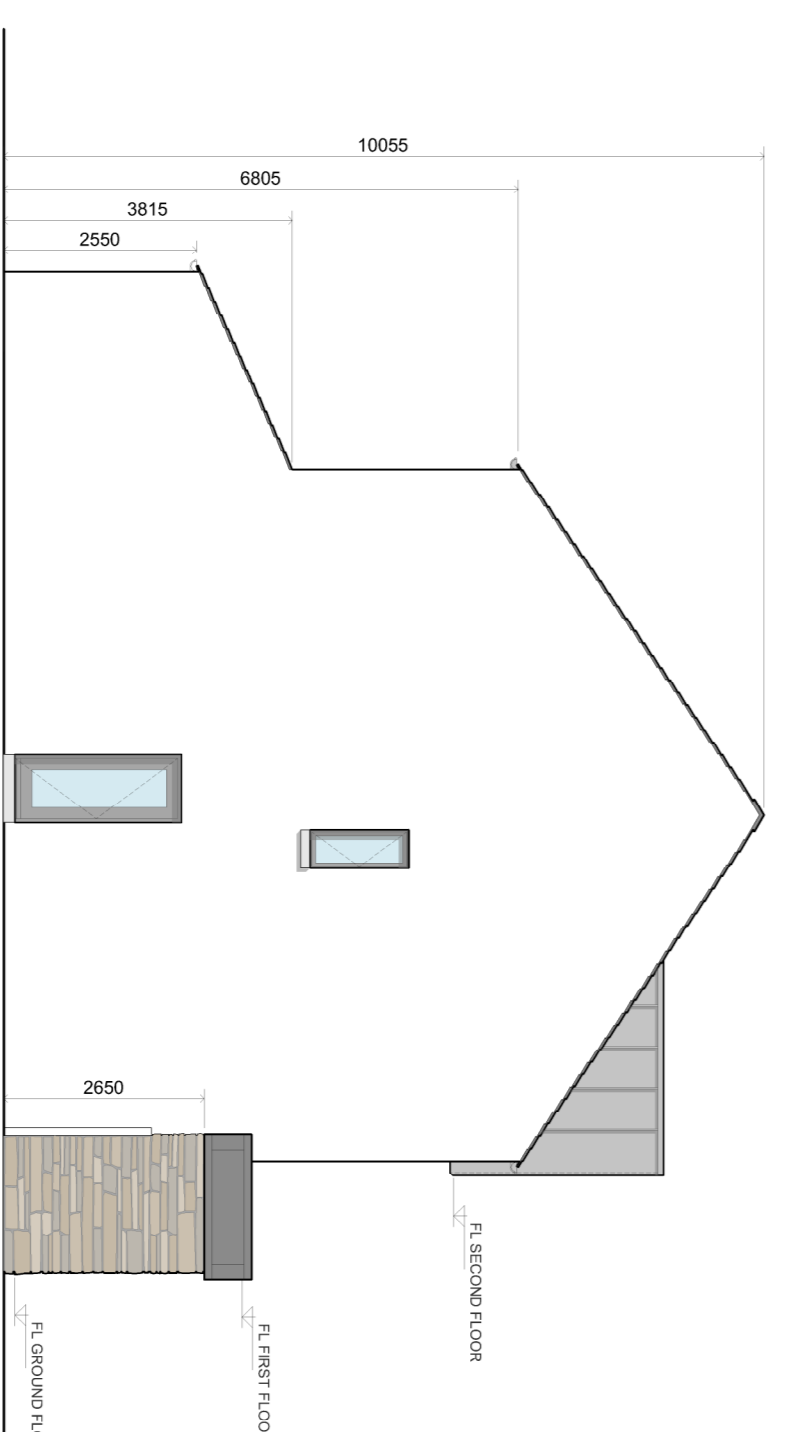
REAR ELEVATION SCALE 1:100



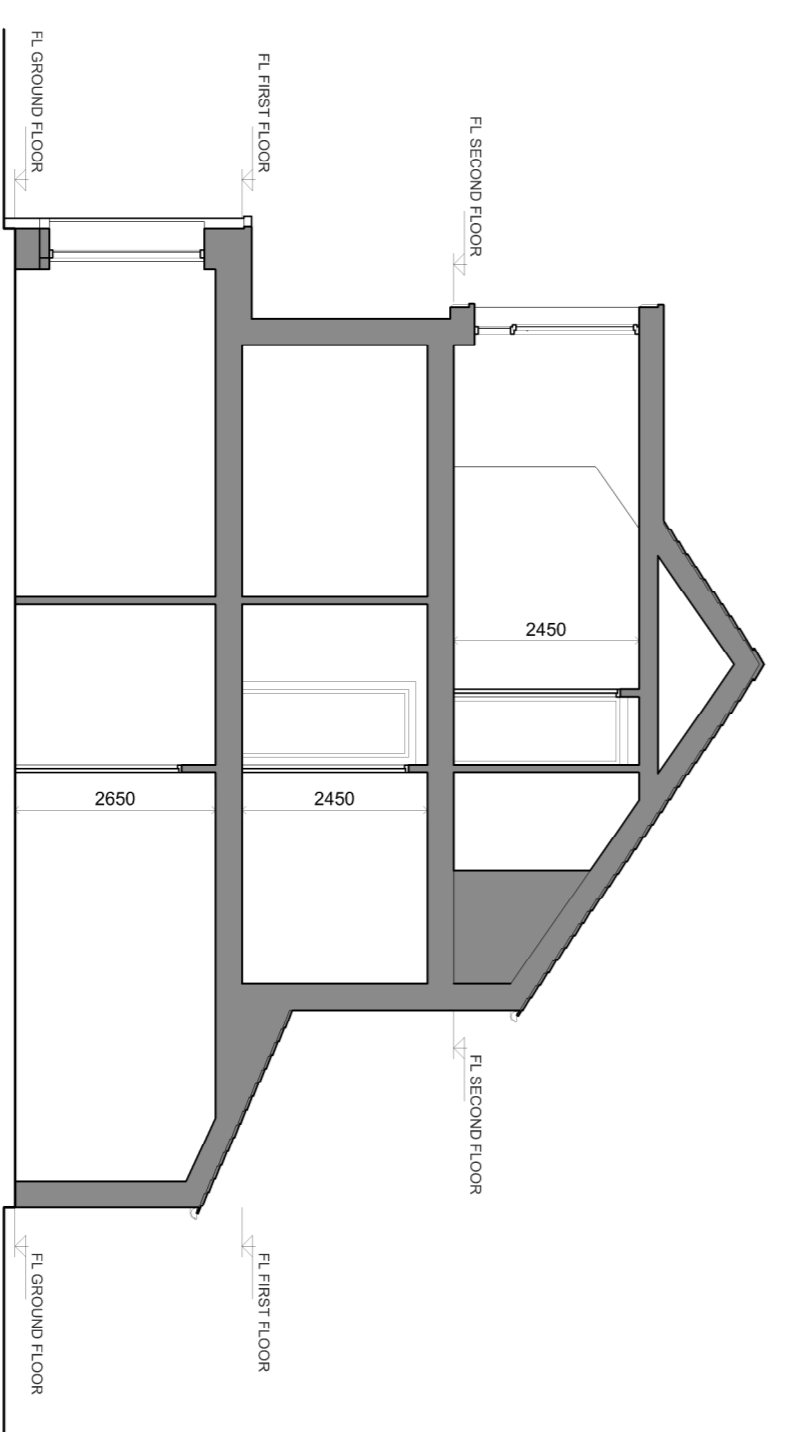
SECTION AA SCALE 1:100



SIDE ELEVATION SCALE 1:100



SIDE ELEVATION SCALE 1:100



SECTION AA SCALE 1:100

- Conditions of Use of this drawing**
- This A1 size drawing is reproduced at a smaller size which makes these conditions difficult to read.
 - The design and content contained herein are copyright of the architect. No part thereof may be copied or reproduced in any form without the prior written consent of the architect.
 - This drawing is to be used only for the specific project and for the specific location for which it has been prepared. It is not to be used for any other project or location without the prior written consent of the architect.
 - The architect's liability is limited to the design and construction of the building as shown on this drawing. It does not extend to any other matters, including but not limited to, the structural integrity, safety, or any other matters.
 - The architect's liability is limited to the design and construction of the building as shown on this drawing. It does not extend to any other matters, including but not limited to, the structural integrity, safety, or any other matters.
 - The architect's liability is limited to the design and construction of the building as shown on this drawing. It does not extend to any other matters, including but not limited to, the structural integrity, safety, or any other matters.
 - The architect's liability is limited to the design and construction of the building as shown on this drawing. It does not extend to any other matters, including but not limited to, the structural integrity, safety, or any other matters.
 - The architect's liability is limited to the design and construction of the building as shown on this drawing. It does not extend to any other matters, including but not limited to, the structural integrity, safety, or any other matters.
 - The architect's liability is limited to the design and construction of the building as shown on this drawing. It does not extend to any other matters, including but not limited to, the structural integrity, safety, or any other matters.
 - The architect's liability is limited to the design and construction of the building as shown on this drawing. It does not extend to any other matters, including but not limited to, the structural integrity, safety, or any other matters.
 - The architect's liability is limited to the design and construction of the building as shown on this drawing. It does not extend to any other matters, including but not limited to, the structural integrity, safety, or any other matters.
 - The architect's liability is limited to the design and construction of the building as shown on this drawing. It does not extend to any other matters, including but not limited to, the structural integrity, safety, or any other matters.
 - The architect's liability is limited to the design and construction of the building as shown on this drawing. It does not extend to any other matters, including but not limited to, the structural integrity, safety, or any other matters.
 - The architect's liability is limited to the design and construction of the building as shown on this drawing. It does not extend to any other matters, including but not limited to, the structural integrity, safety, or any other matters.
 - The architect's liability is limited to the design and construction of the building as shown on this drawing. It does not extend to any other matters, including but not limited to, the structural integrity, safety, or any other matters.

PROJECT	Housing Development, Monaghan, Carrmore, Co. Galway
CLIENT	Attain Ltd
DRAWING	House Type E
GENERAL ARRANGEMENT DRAWINGS	Stage 3
DRAWING SCALE	1:100
DRAWN BY	B.S.
CHECKED BY	E.T.
DATE	June 18
SCALE	2325-P-017